

COMMUNITY RENEWAL

Working Differently

Community Renewal

Growing recognition about the importance of investing in communities as a field of public policy.

Evidence that community strength/cohesion buffers against impact of poverty and social isolation

Stronger communities produce benefits that are tangible - the role for government in building stronger communities is less clear.

Community Renewal

The traditional view - beyond government's reach and can be ignored or left to non government agencies.

Recent academic research and public interest discussions in Australia and overseas, reveal an important role for government

Community Renewal

Policy interest is growing in the disconnection between government's traditional departmental structures and their capacity to address emerging complex problems.

Nationally and internationally all levels of government are responding by developing new ways of working locally that can promote social, economic and environmental outcomes.

Community Renewal

- ▶ In SA creation of 'community renewal' - evidence that stock driven approach (with marginal community development effort) doesn't leverage sustainable shift in circumstances
- ▶ Can further exacerbate problems for government and for people with no market power – other areas of decline

Community Renewal

- ▶ **Unintentional, unrecognised impact on the very things that influence independence and wellbeing – social networks, access to services etc**
- ▶ **WHOG program delivery / spending isn't stemming demand – high cost end responses – just in time is just too late - statutory, revolving door**

Community Renewal - SHP

A key strategy to support housing continuum

Early intervention/ prevention approach

**Mix of housing types and tenures,
circumstances**

**Integrated planning and delivery of
infrastructure and services**

Community Renewal Strategies

Opportunities to Participate

Responsive services

Community connections

Community Infrastructure

Resilient
Resilient

Active
Active

Responsive Services

Integrated service planning and funding
Integrated management and delivery
NGO capacity development
Non-traditional service responses and different connections across sectors
Customer Involvement

Infrastructure

Housing mix – form, size, Mix of essential services
State agency and Local Government capital planning
Transport routes and times
Shared facilities for multiple community use
Lighting, street scapes, walking and cycling, Traffic management,
Playgrounds, open spaces
ICT

Opportunities to Participate

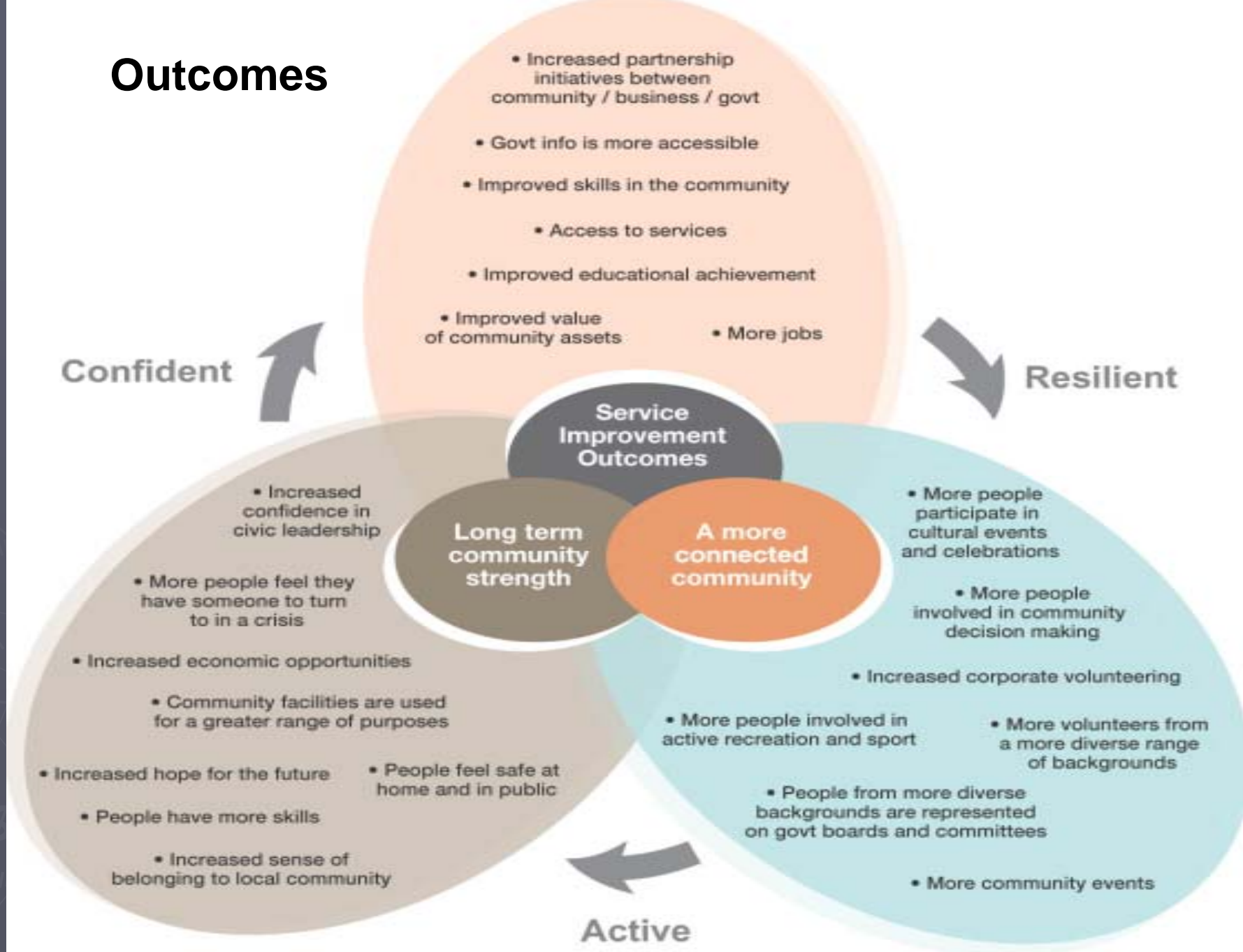
Community Governance
Neighbourhood Development

Community Connections

Joint endeavours and community enterprises – business and LG
Sport and recreation program access
Neighbourhood Volunteering and mentoring
Community groups - capacity development
Diversity of cultural and community events
Arts and cultural expression

Confident
Confident

Outcomes



The challenges for Government working differently

- ▶ **Building an evidence base to support and evaluate specific community intervention strategies**
- **Social policy promotes community 'strengthening' actions**
- **Modernisation of public sector capabilities, cultures and structures**

The challenges for Government working differently

- **New administrative arrangements that support local solutions - cut across traditional Departmental boundaries and levels of government**
- **Constructing innovative ways of planning and working which bring community and business together**

The challenges for Government working differently

- ▶ Working 'with' not 'on' – the engagement continuum
- ▶ Moving from control of expertise and resources to enabler and broker
- ▶ Keeping things simple