

SHELTER SA

# ANNUAL REPORT 2019



# Contents

**Minutes of 2018 AGM**

**Objects**

**Strategic Plan**

**Chairperson's Report**

**Executive Director's Report**

**Treasurer's Report**

**Achievements**

**Quotes from Stakeholders**

**Board and Staff 2018-2019**

**Shelter SA Members 2018-2019**



# Minutes of 2018 Annual General Meeting

19 October 2018 at Adelaide Skydeck, 13/147 Pirie Street Adelaide

The meeting opened at 1.45pm

Paul Astley, Shelter SA Chairperson, welcomed members, guests and distinguished guests. The Chairperson acknowledged the meeting was being held on Kaurna land and paid his respects to Elders past and present.

## 1. PRESENT

### Individual Members

**Paul Astley**, Shelter SA Board, Chairperson  
**Mel Blondell**, Shelter SA Board  
**Tom Earls**, Shelter SA Board, Public Officer  
**Michael George**, Shelter SA Board, Treasurer  
**Marlene Littlewood**  
**David Scougall**  
**John Smith**, Shelter SA Board, Secretary  
**Raymond Radice**  
**Joanne Fox**

### Guests

**Michael Buchan**  
**Alison Kimber**  
**Andrew Davis**  
**Anne Purdy**  
**Anne Gale**  
**Christopher Karvountzis**  
**Glen Williams**  
**Helen Donovan**  
**Joe Capozza**  
**Margie Fahy**  
**Meredith Perry**

### Organisational Members

**Ken Henderson**, BaptistCare SA  
**Patrick Kukla**, Towards Independence, Shelter SA Board, Deputy Chairperson  
**Lauren Grant**, City of Adelaide  
**Deborah Lockwood**, Relationships Australia SA  
**Fiona Kelly**, Uniting Care Wesley Bowden, Shelter SA Board  
**Megan Hughes**, Women's Safety Services SA  
**Michael Lennon**, Housing Choices Australia  
**Adrianna Burnes-Nguyen**, Junction Australia

**Kate Lake**  
**Michelle Lensink** MLC  
**Peter Clayfield**  
**Phillip Martin**  
**Quyen Hoang**  
**Steph Richards**  
**Susan Horsfall**  
**Tammy Franks** MLC  
**Lee-Anne Caltedge**  
**Tracy Fox**  
**Nat Cook** MP  
**Gary Storkey**

# Minutes of 2018 Annual General Meeting

## Staff

Alice Clark, Executive Director  
Bonnie Keates, Projects and Events Officer  
Michelle Lindblom, Expo Management Team  
Kate Lake, Adelaide University Arts Intern

## 2. APOLOGIES

Clare MacAdam  
Eddie Hughes MP  
Frances Bedford MP  
Dan van Holst Pellekaan MP  
Jing Lee MP  
John Gardner MP

Lara Laas  
Paula Luethen MP  
Peter Treloar MP  
Rachel Sanderson MP  
Rob Edwards  
Stephan Knoll MP  
Steven Marshall MP

Jon Gee MP  
Mark Parnell MP  
Nick McBride MP  
Pam Simmons  
Trish Kerwood  
Vickie Chapman MP  
Kim Holmes  
Sorcha Walshe

---

## 3. MINUTES OF THE 2017 AGM

Minutes of the 2017 AGM were included in the 2017-2018 Annual Report.

**Motion:** That the minutes of the Shelter SA AGM held on 26 October 2017 be accepted as a true and correct record.

**Moved:** Paul Astley

**Seconded:** Ken Henderson

**Carried**

## 4. CHAIRPERSON'S REPORT

The Chairperson, Paul Astley, acknowledged the achievements of Shelter SA over the past year, noting the highlights and dedicated work of staff. Paul Astley's full report is included in the Annual Report.

**Motion:** That the Chairperson's Report for 2017-2018 be accepted.

**Moved:** Paul Astley

**Seconded:** Fiona Kelly

**Carried**



## **5. EXECUTIVE DIRECTOR'S REPORT**

The Executive Director's Report was presented in the Annual Report. The Chairperson invited the Executive Director to present a summary of her report and expressed appreciation of her efforts.

## **6. TREASURER'S REPORT**

The Treasurer's Report was included in the Annual Report. The Chairperson invited the Treasurer to present a summary of the report and expressed appreciation of his efforts.

**Motion:** That the Treasurer's Report for 2017-2018 be accepted.

**Moved:** Michael George

**Seconded:** Tom Earls

**Carried**

## **7. AUDITED FINANCIAL STATEMENT**

The full Audited Statement is included in the Annual Report.

**Motion:** That the Audited Statement is accepted.

**Moved:** Michael George

**Seconded:** Tom Earls

**Carried**

## **8. Appointment of Auditor**

**Motion:** That VM Accounting be appointed as auditor for the financial year 2018-2019.

**Moved:** Fiona Kelly

**Seconded:** Tom Earls

**Carried**





# Objects of Shelter SA

**The Association is formed with the principle object of working towards benevolent relief of poverty, distress and disadvantage by individuals and families in South Australia by:**



Promoting and maintaining the right of every person to access affordable, safe and secure long-term housing that they identify as appropriate to their needs.



Promoting and maintaining the right of every person to housing of a quality which enhances people's health, well-being, dignity and life opportunities.



Promoting the benefits of public and community housing in the community and all spheres of government.



Publishing, researching, collecting or otherwise disseminating information on matters relating to the provision of housing, particularly for people on low to moderate incomes for public benefit and the relief of housing poverty.



Establishing, supporting, resourcing and coordinating non-government organisations and agencies with similar interests and objectives to the Association.



Promoting opportunities for members of the community to access housing provision free from discrimination as a result of factors such as age, gender, ethnicity, health status or disability.



Promoting and supporting consumer and community participation in decision making in relation to their housing and to promote access to avenues of appeal across all housing tenures.



Doing all such things as may be incidental to the attainment of these Objectives. The Association is a non-profit organisation operating to achieve the above benevolent purposes.



## ADVOCACY & POLICY

**To assist member organisations by positively informing and influencing government decisions about housing policy, funding and service delivery as they pertain to people in need of benevolent assistance.**

Collaborate & consult with:

- State Government
- Peak bodies
- Service providers
- Businesses
- Community members

Advocate for, and raise political & public awareness about, housing policy, systems, funding and service delivery in South Australia as they pertain to people in need of benevolent assistance. Highlight and advocate for improved housing systems and policy in regional South Australia for the benefit of people in need of benevolent assistance. Advocate at a Federal Government level, both independently and through participation in National Shelter.

## LEADERSHIP & INNOVATION

**Demonstrate leadership by exploring and developing new ideas, policies and funding models to aid and assist member organisations to deliver better relief of poverty, distress and disadvantage to people in need of benevolent assistance; Progress innovative solutions relating to housing systems and programs.**

Employ existing and emerging technology to maintain and strengthen Shelter SA's position as the "go-to" source of credible, reliable information about housing policy and systems in South Australia.

Communicate progress and achievements on important matters through targeted electronic, social and traditional media.

Develop and share innovative advocacy tools, ideas and research with members, supporters and other stakeholders.

## ENGAGEMENT, PROFILE & REACH

**Engage and communicate effectively with key stakeholders relevant to housing policy and systems issues for and on behalf of member organisations and those who require benevolent relief; maintain and increase the profile and impact of Shelter SA through multi-channel communications.**

Actively participate in external forums, consultations, committees and meetings across South Australia.

Develop and deploy all appropriate media to achieve the Shelter SA vision.

Maintain and expand strong relationships with key stakeholders, strategically important decision-makers and decision influencers (government, community, business).

Strengthen and build on our networks, membership and supporter base. Develop and implement culturally appropriate engagement and operational strategies for special needs groups, including people living on low incomes and those in need of benevolent assistance.

# STRATEGIC PLAN



**PAUL ASTLEY**

Chairperson

I am pleased to present the 2019 Shelter SA Annual Report. Shelter SA has had a successful year in achieving our Strategic Plan. The Board has been actively supporting our operational team in the pursuit of our policy, advocacy and research goals. We acknowledge and thank our Executive Director, Dr. Alice Clark, past staff member Bonnie Keates and current staff members Sorchia Walshe, Matthew Tieu, Michelle Lindblom and Caitlin Smith.

We have continued to work closely with Minister Michelle Lensink, the South Australian Housing Authority Board Members and departmental staff contributing to and supporting the consultation process for a new Housing Strategy for the State. We look forward to the release of the Strategy and its implementation to achieve an improvement in the way we house South Australians living on low incomes and a reduction in the number of people experiencing homelessness.

Affordable and secure housing is a basic human right and is the basis upon which people can live their lives, bring up their children and achieve their potential. New construction of affordable and social housing can also be a driver of a healthy economy and a source of employment and we would like to see South Australia achieve social and economic outcomes through the provision of housing rather than focus only on economic goals.

Unfortunately, the number of people experiencing homelessness has not reduced in the past twelve months and our member organisations report extreme difficulty in placing their clients into any type of accommodation in the city, suburbs or regions. While Shelter SA continues with policy and systems work, we have also supported a number of innovative schemes to try to increase the housing available for people experiencing homelessness and living with housing stress which you can read about in this report including Homes For Good and CapitalAsset.

# Chairperson's Report

Shelter SA is currently funded until the end of June 2020 as are specialist homelessness services. We were pleased that the State Government achieved greater notice periods and certainty for service providers through contract extensions and we have advocated for further improvements and long term contracting in the future.

I acknowledge the invaluable contribution of all Board Members who have served voluntarily during the last year. Board Members have been generous in contributing their extensive expertise and time to ensure we achieve our Strategic Plan. We currently enjoy a very stable group of Board Members as the majority are entering their second, third or fourth terms with low turnover, while we ensure we retain and develop the skills we need to govern effectively.

I thank our State Government funding partners who recognise the importance of Shelter SA in supporting their work in the housing space. You will see in our Executive Director's report overleaf, the ways in which we can assist State Government through our evidence-based policy work, our research, our advocacy, our networks and our people.

Shelter SA's advocacy is needed now more than ever as the housing crisis facing South Australians living on low incomes continues. Shelter SA is in the process of achieving its third Australian Service Excellence Standards award and is in a strong position to continue its work on behalf of those who support our organisation and people living on low incomes.

**Paul Astley**  
**Chairperson**



**DR ALICE CLARK**

Executive Director

Shelter SA is an independent, not-for-profit organisation funded by State Government. We are an apolitical organisation that aims to work collaboratively with State Government, all politicians, industry, the not for profit sector and housing consumers, to achieve effective and efficient housing policies, laws and services that best serve South Australian citizens who are living on low incomes.

Shelter SA has a large, sound body of work and expertise to offer State Government and we seek to support Minister Lensink and her portfolio, through the Housing Authority, with our evidence-based research, advocacy and our networks. This year, State Government asked us where and how we can assist them with the development and implementation of the State Housing Strategy and we put forward five areas as follows:

**Evidence-based policy**

The large body of work that belongs to Shelter SA should form part of the evidence and data that is used to formulate the Housing Strategy and influence its implementation. Our written work is evidence-based and is developed using a combination of high-quality data, academic research and community consultation. Our written reports and submissions are solutions focussed and contain policy and systems recommendations and intelligence from the community.

A good example of our policy work is demonstrated through our regional engagement strategy. We visit the regions to hear directly from locals about the housing issues where they live and work and unfortunately, while geographic areas are unique, the issues that arise from our consultations rarely alter as the policies that could effect change remain static. In the regions, the lack of emergency accommodation, domestic violence shelters, public housing, responses to young people and housing affordability problems generally, remain. We were most recently in Coober Pedy.

# Executive Director's Report

Our Aboriginal Cultural Advisory Panel helped us to plan a workshop called “Transitions” in 2017. The workshop focussed on times when Aboriginal people are moving out of institutions (such as prison, hospital, mental health facilities, youth detention) and back to families and communities. We were pleased to see the recommendations in our workshop report reflected in the new Aboriginal Affairs Action Plan released by State Government and this is another example of how we have contributed to policy and strategy work.

### **Our research**

Shelter SA has the necessary skills to conduct excellent research and facilitate workshops to include the voices of housing consumers, human services workers, politicians and a range of other citizens in policy formation. Our activities raise awareness about housing policy and contribute to public debate in mainstream media and social media. If there is specific research that the Housing Authority needs to occur, we are willing and able to conduct special projects, potentially at no extra cost to Government, and we welcome continued exploration of our capacity to contribute to the Government’s work.

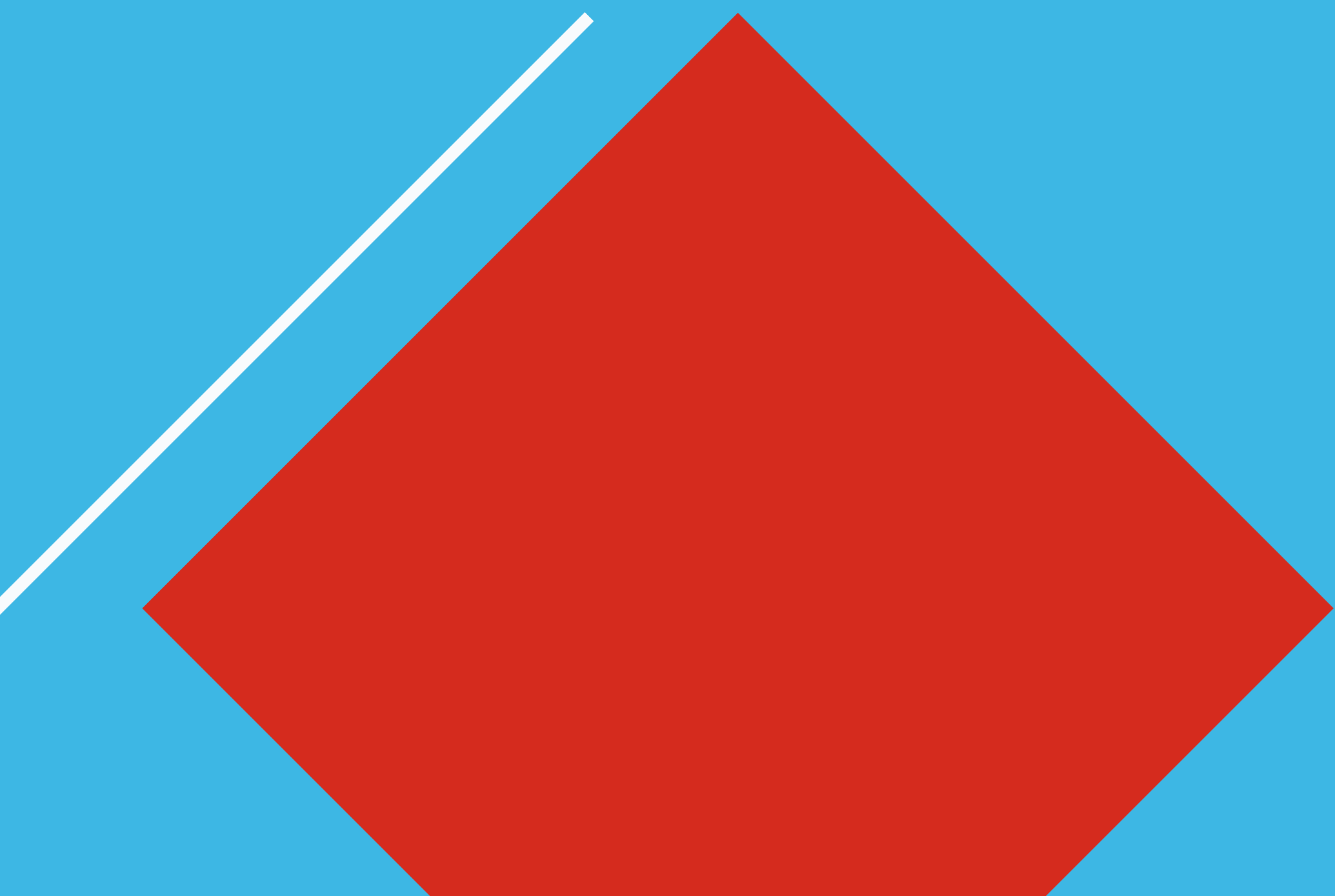
One of our projects looked at racial discrimination in the private rental market as it is experienced by Aboriginal and Torres Strait Islander peoples and non-Aboriginal people.



Shelter SA meets with local human services workers in Coober Pedy.



An image used for our research on racial discrimination in the private rental market.



The results of our literature review and survey work were presented and disseminated in a written report, through mainstream and social media and delivered by Sorchá Walshe in a presentation at the National Housing Conference in Darwin. The impact of this project included engagement with the Commissioner for Equal Opportunity whom we encouraged to include people who witness racial discrimination in their ability to report discrimination to the Commission and through mainstream media exposure.

### **Our advocacy**


Our evidence-based work provides a strong platform for our advocacy which centres around policy changes or new policies and legislation, to ensure that they do not further disadvantage people living on low incomes and that they are fair. We are strategic when it comes to advocacy and can harness our strong relationships with key stakeholders to progress our policy work and inform the State Government.

For example, we recently spent time with Members of Parliament, persuading them of the importance of cross-party support for the housing strategy when it is published so that we can have a long-term plan in place to provide South Australians with the housing they need and that we can afford. All members of parliament we have met with have privately agreed to support the strategy at a high level.

Our membership of National Shelter means that we regularly engage in national policy work and undertake political engagement to augment our South Australian advocacy.

### **Our networks**

Shelter SA is very well connected to all sides of politics, public servants across a range of departments, not for profit organisations including human services, homelessness services and social housing providers, other housing related professions and organisations, universities, academics and housing consumers both across South Australia and nationally. We can assist with the Housing Strategy through tapping into our networks to share information and bring people together for consultation.



Shelter SA is also well connected to community members and other organisations through our mailing list. We communicate regularly with local journalists and we have a large, highly engaged social media audience, evidenced by metrics from our various platforms including Facebook, Twitter, LinkedIn and Instagram that can assist State Government to communicate with and engage the public, industry and the sector.

### **Our innovation & leadership**

We are very excited to soon launch our new Homes For Good program with our first partner, Cornerstone Housing. The program will encourage private landlords to contribute their private rental properties and accept sub-market rents set at 30% of household income. There is no subsidy available currently for landlords however they can apply for a tax deduction for the difference between market rent and sub-market rent and we hope that other community housing providers and real estate agents will join the program.

We continue to work with not for profit land-owners to educate them about how to strategically harness their land assets through our CapitalAsset concept and most recently have been assisting Girl Guides SA. We have also been working with a private developer who is creating a unique home ownership product specifically targeting people living in the bottom household income quintile and you will hear much more about this exciting new product in the coming weeks and months.

### **Our people**

The small team at Shelter SA work together on our projects to achieve outcomes that are greater than the sum of our parts. With scarce resources we are still able to bring into play our skills, knowledge and experience to fulfil a broad and effective remit on housing in South Australia. I would like to thank my past staff member Bonnie and current team members, Sorchia, Matthew, Michelle and Caitlin for their contribution to Shelter SA and their support. I also thank the Shelter SA Board Members for their carriage of our governance and strong support and guidance to the operational team.

Shelter SA has had another busy year packed full of projects, submissions, research and community conversations with governments, not for profits, housing industry representatives, other peak bodies and most importantly, housing consumers! You will see in this Annual Report a summary of some of our activities and our impact in the community. We look forward to working with you all in the coming year.

**Dr. Alice Clark**  
**Executive Director**





**MICHAEL GEORGE**

Treasurer

I am pleased to present the Shelter SA Treasurer's report for the year ending 30 June 2019. The 2018-2019 financial year was a busy and eventful year for Shelter SA.

We are pleased to announce that our funding contract has been extended to June 2020 and we are continuing to work with the South Australian Housing Authority in securing a longer term funding contract to deliver exceptional outcomes.

For the 2018-2019 financial year, Shelter SA performed well against budget and has maintained a strong cash position which will assist in the delivery of key projects in the new financial year. The Financial Statements have been audited without qualification.

I hereby move that the Audited Financial Statements be accepted as presented.

**Michael George**  
Treasurer

# Treasurer's Report



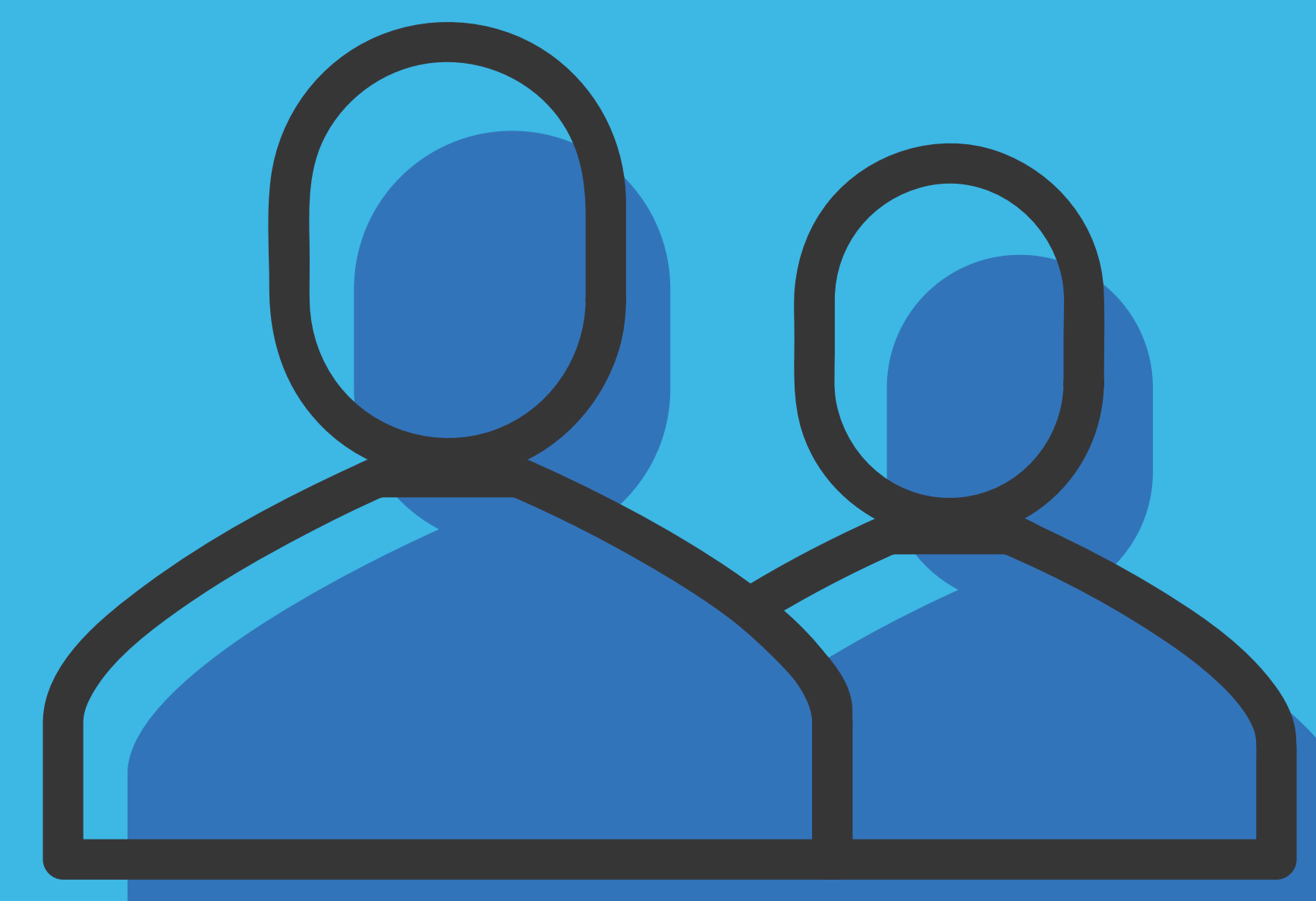
560,853

people on Facebook



488,300

people on Twitter



17,159

people on LinkedIn

# SOCIAL MEDIA REACH

17



Consultations and events

23



Publications

30+

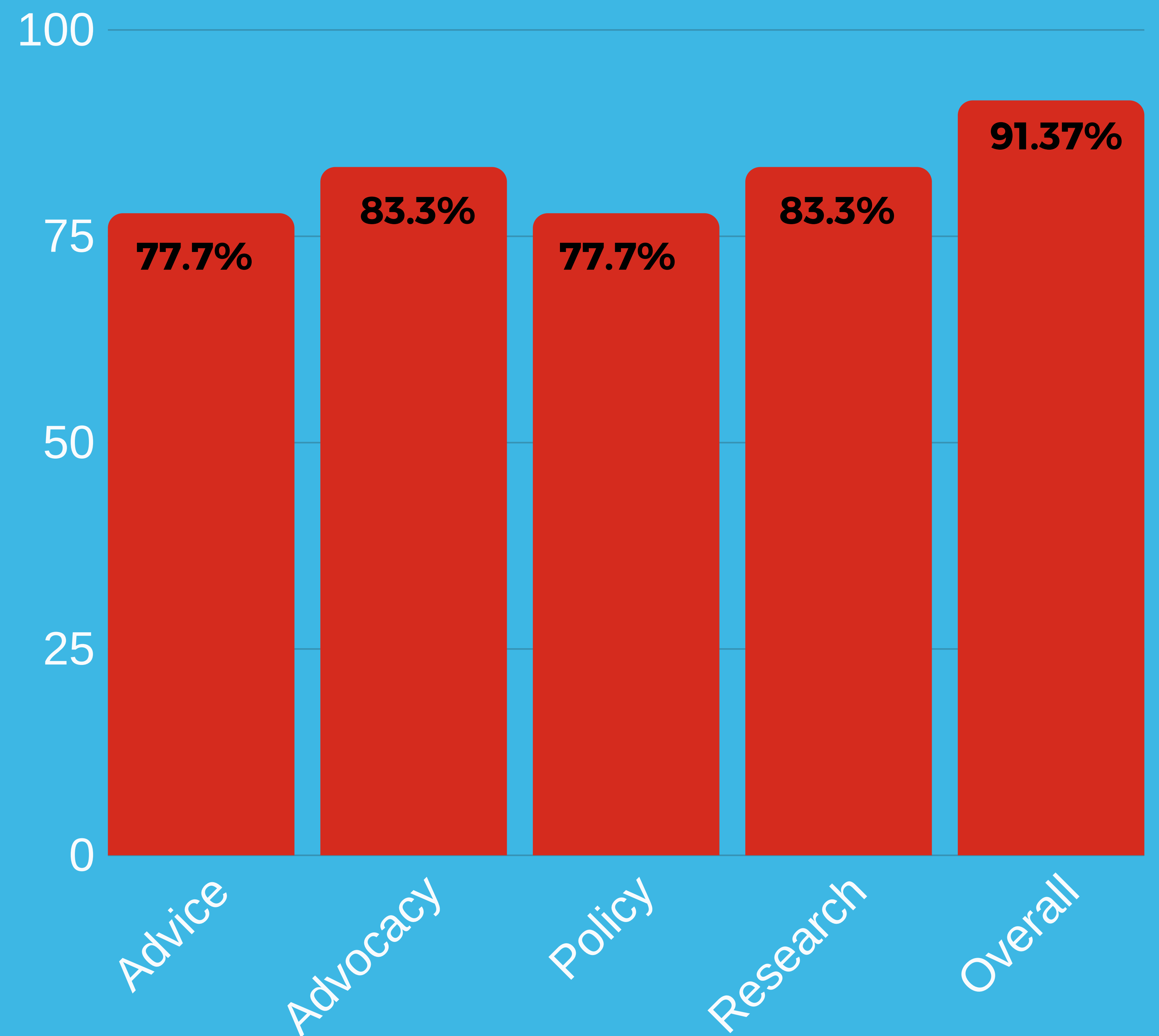


Appearances in mainstream  
media

# ACHIEVEMENTS FOR THE FINANCIAL YEAR

# SATISFACTION RATING

Data from 2018-2019



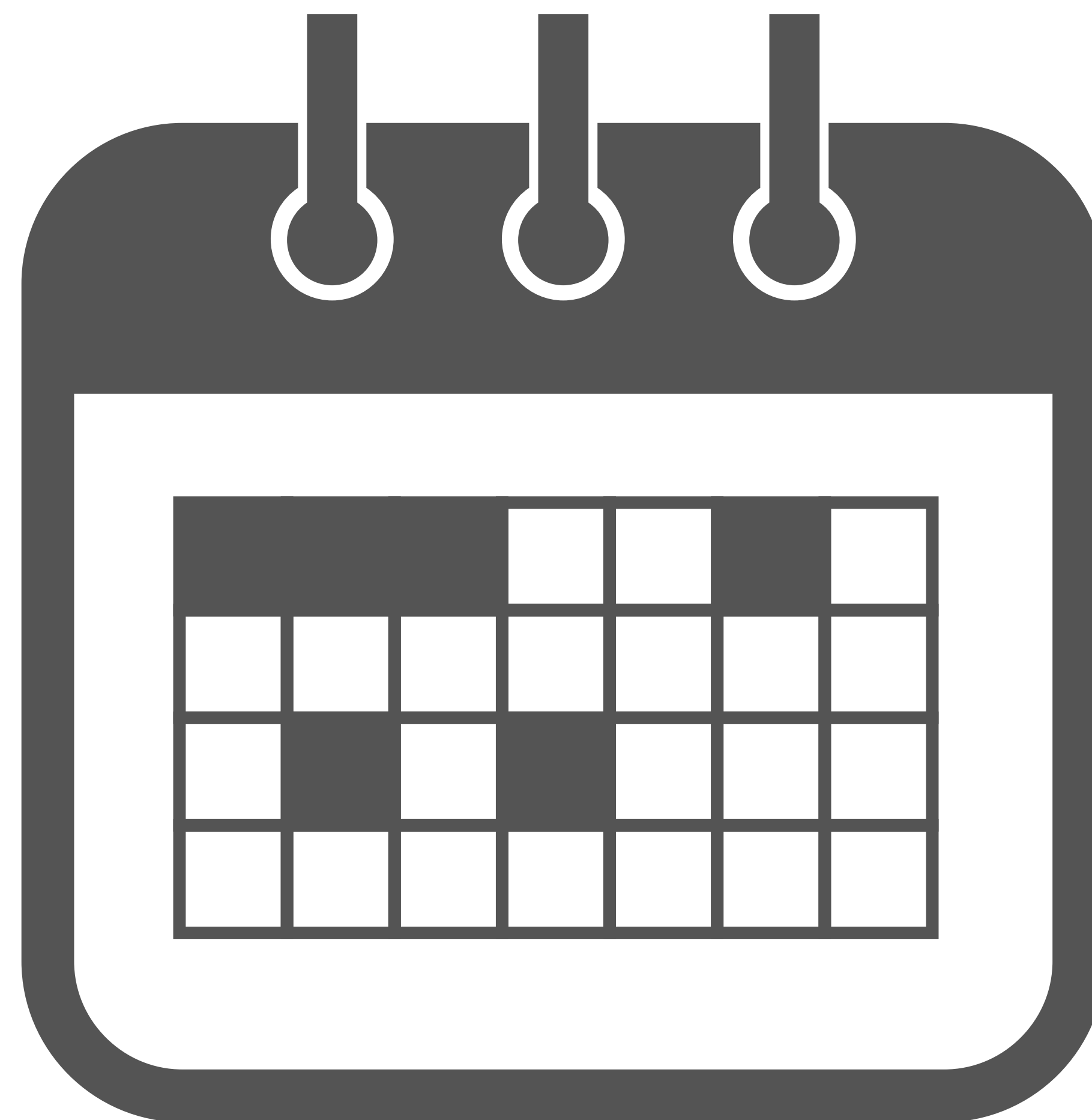
# Major Events

## **FLEURIEU WORKSHOP**

Shelter SA held a workshop to bring together people in the Southern Fleurieu to think laterally, discuss innovative ideas and develop solutions to housing issues in the region.

## **MOUNT GAMBIER WORKSHOP**

Shelter SA traveled to Mount Gambier to identify housing issues in the region, and develop innovative solutions.



## **ADELAIDE HILLS WORKSHOP**

The Shelter SA team met with locals and service providers in the Adelaide Hills to develop innovative housing solutions to help end homelessness and housing stress.

## **HOMELESS CONNECT EXPO**

Our 2018 Homeless Connect: Health and Housing Expo saw 400+ attendees be connected with vital health and housing services around Adelaide.

# Shelter SA's Activities



## Responding to Children in Juvenile Justice Centres in South Australia

### Briefing for the Commissioner for Children and Young People

South Australian children who are detained in juvenile justice centres are falling through the gaps when they move back to their families. In 2016, Shelter SA wrote a [briefing paper](#) about children and juvenile justice centres and worked with relevant stakeholders to discuss the systemic issues that negatively affect children leaving institutions. The paper was prompted by the findings of the Royal Commission into Child Protection's report titled '[The Life They Deserve](#)'. Children in juvenile justice centres are a relatively small, but extremely vulnerable cohort of children, who are easily identifiable and who should be given greater care. Our research identified that policies across State Government departments and within the community services are adequate, but their implementation is not consistently keeping children safe. Bail accommodation must place children back into safe environments and this issue is more than just a question of bricks and mortar. It is crucial that children leaving youth detention have an affordable, secure, safe and appropriate home and family environment to return to when they leave youth detention; the cost of doing nothing is high and may increase the rates of recidivism. When we know that children have a family situation that is unsafe or unsuitable due to their physical accommodation or family problems, it is not acceptable to send them back to the same situation.

One of the major barriers identified by stakeholders to effectively support transition from detention back to the community was poor information sharing between service providers. Some service providers struggle to balance the competing interests of sharing information and maintaining the young person's right to privacy. Stakeholders said that there was poor discharge planning or an absence of discharge planning and an inadequate handover of responsibility for the safety of the children between institutional settings and community settings. Often community-based services, schools and local authorities were not aware children were returning and anecdotal evidence was provided that children are sent back to regional settings unaccompanied on buses.

The cost of detaining children in juvenile justice centres is high and considerably more expensive than other forms of community detention. In the 2019 Report on Government Services, the average national cost per day per young person was \$1482; for community-based supervision, it was \$140 per day per young person and this should be a motivating factor to keep children out of detention.<sup>1</sup>

<sup>1</sup> <https://www.pc.gov.au/research/ongoing/report-on-government-services/2018/community-services/youth-justice/rogs-2018-partf-chapter17.pdf>



## Opinion 2

## Dr Alice Clark

Executive Director Shelter SA



### Out of Sight out of Mind? Our Regional Children and Young People

Shelter SA is the peak body for housing in South Australia. Our remit is for State-wide policy and systems advocacy, community engagement and research. Often, rural and regional housing and homelessness services, and their clients, seem to be forgotten in policy discussions and decisions. Shelter SA has a regional engagement strategy to ensure that we systematically visit our regional members to seek their views and hear about the unique housing issues they experience, bringing back that intelligence to policy-makers.

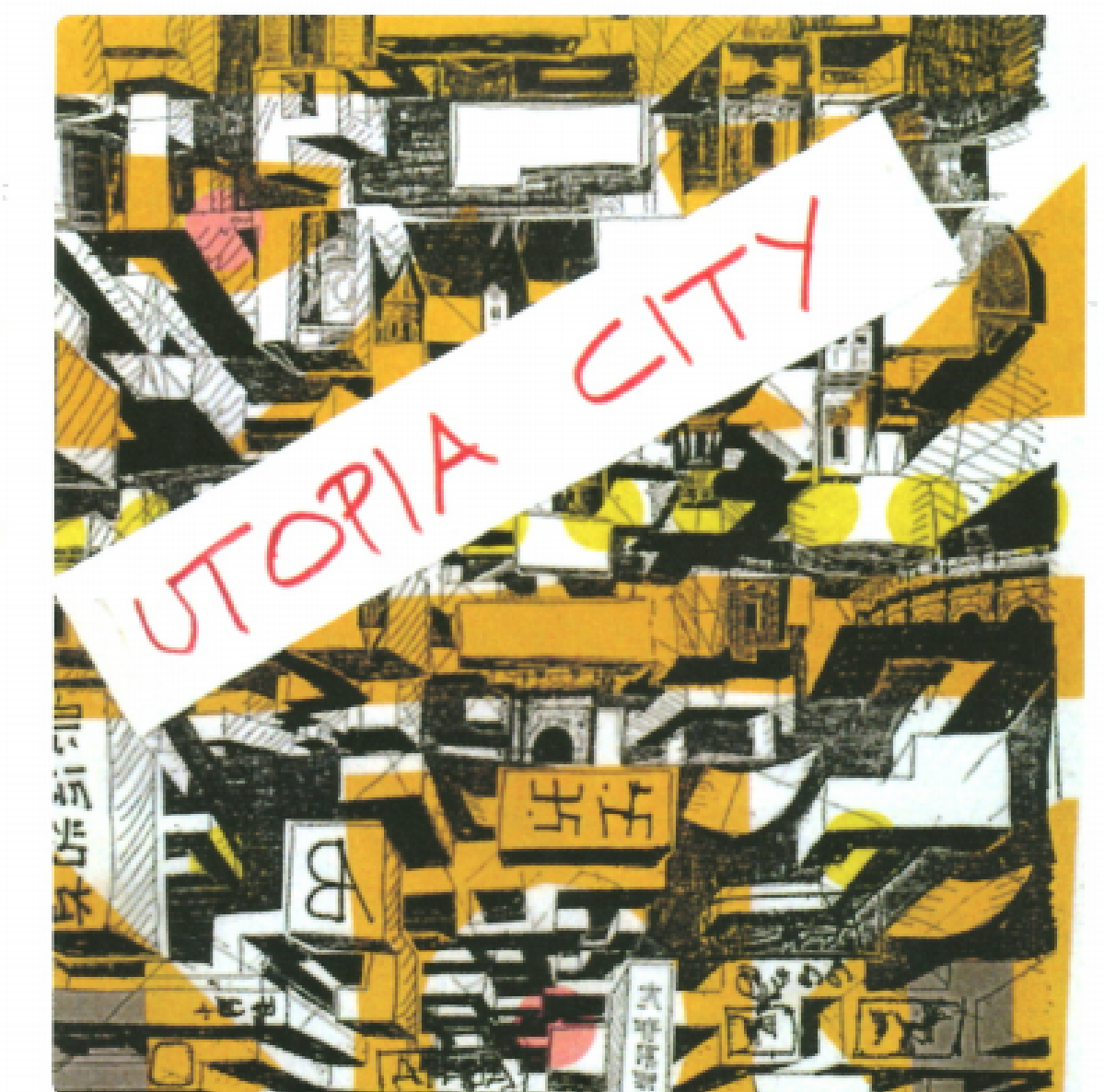
Since I have been at Shelter SA, we have visited Berri, Murray Bridge, Mt. Gambier, Port Lincoln, Port Augusta and Port Pirie to speak with locals. Without fail, the number one issue that is raised during these visits is the lack of crisis accommodation in the regions, especially for children and young people. Often the approach to accommodating a child or young person in an emergency is to send them to Adelaide, from as far away as 600km. Our regional workshop

participants agree that a response that removes a child from any supportive networks, friends and family they may have, their school and other familiar surrounds is not in the best interests of the child.

After each visit to a region, Shelter SA has written a report and shared it with the government of the day, as well as providing personal briefings to relevant ministers and bureaucrats. To date, unfortunately there has been no change in the approach to assisting children and young people who are at risk of homelessness, experiencing homelessness or involved with serious child protection issues, even though local workers do

the best they can. One of the regions reported handing out tents to young people when they have nowhere else to go. Surely we can do better?

During our regional visits, we have discussed many alternatives with the people we've spoken with, who have not only been workers, but other interested and concerned locals including police officers, church leaders, local government representatives, local members of parliament, teachers and citizens. Ideas that have been put forward to address the shortage of public housing and emergency accommodation include activating local spaces and empty homes,



# Shelter SA's Activities



**"I am tired of being treated like a second-class citizen!"**

**Racial Discrimination in the Private Rental Market**

May 2019

Shelter SA ©  
44/81 Carrington Street  
ADELAIDE SA 5000  
Tel: 08 8223 4077  
[www.sheltersa.asn.au](http://www.sheltersa.asn.au)

For the purposes of this document, the term Aboriginal is inclusive of Torres Strait Islander peoples. The contents, or parts thereof, cannot be reproduced without acknowledgement of Shelter SA as the source.

## #PositivePetPolicy in South Australia

Shelter SA is calling for a positive pet policy in the private rental market for South Australia and we invite you to back us!

### #1 All Rental Homes Should Allow Pets

Private renters should be allowed to bring pets into their homes. Pets are a very important part of people's lives. More than two thirds of Australian households own pets and with home ownership on the decline, more families must reside in private rental accommodation. During March 2019, of 97 properties listed for rent on one real estate website for the suburb of Marion and surrounding suburbs, only 16 properties were pet-friendly.



There is **no evidence** that the introduction of pet bonds will increase the number of pet-friendly rentals on offer. Unfortunately, it is very difficult to change the attitudes and behaviours of some landlords and real estate agents on any issue, including allowing pets.



## EYE ON SOUTH AUSTRALIA

Last year, the South Australia people elected a Liberal government, the first in almost two decades. While the tides of change are turning for the state, we ask, "but what's happening about the housing crisis?" Three experts from Shelter SA look at how the current situation is playing out in South Australia across the following pages.

ShelterSA  
Housing: a basic human right

## A HOUSING STRATEGY FOR SOUTH AUSTRALIA – THEN AND NOW

> Dr Alice Clark from Shelter SA gives us an insider perspective on South Australia's methods for creating a housing strategy across the past eight years.

In this opinion piece, I am reflecting on the development of a housing strategy for South Australia in 2011, and looking forward to the finalisation of a new state strategy by June 2019. I will outline the similarities and contrasts in the process leading up to the development of the strategies, along with how and when consultation and engagement was satisfactorily completed. Then, I will discuss the positive elements of the approach I believe will result in an effective housing policy that achieves our Minister's vision to stop the decline of social housing and develop evidence-based policy.

### Rewind to 2011

When I first commenced at Shelter SA in 2011, the South Australian Government released a Green Paper called A Housing Strategy for South Australia ("the Strategy") and invited submissions from the public. Shelter SA was asked by the State Government's housing department to consult housing consumers, and include their ideas and opinions about housing in our submission.

The Shelter SA submission referenced relevant academic literature, the opinions of the housing consumers, and the policy platforms of human services providers and other South Australian peak bodies.

After the submission process, the South Australian Government held workshops to test some of their plans and shape the final Strategy. As I remember, the attendees were predominantly from the not-for-profit sector including community housing providers, human services peak body representatives, public servants and human services providers, with a small number of housing industry representatives.

It was difficult to see where the intelligence gathered through the submission and consultation process was reflected in the final document

The resulting Strategy, in my view, was essentially a plan for Housing SA, the South Australian housing department at the time. It was difficult to see where the intelligence gathered through the submission and consultation process was

reflected in the final document. So, it seemed to me that the effort invested in conducting citizen engagement, research and attending workshops was largely wasted, as many of the ideas and opinions expressed during the consultation were not captured in the Strategy.

Evaluation of the targets set out in the Strategy is hidden away in annual reports and triennial reviews and, mostly, is not positive (see below diagram).

- ✓ The transfer of 5000 homes to the not-for-profit community housing sector was successfully completed with the intention of improving tenancy support services and conducting maintenance.
- ✗ 1000 homes in 1000 days, 164 properties built and 167 still under construction.
- ✗ The removal of 4000 homes that were built prior to 1985, is set to be completed by the year 2020. The total amount of homes renewed so far is 167 and 104 still being built.
- ✗ Homes in the public housing sector have seen better days as the majority were built between 1981 and 2000, making them more likely to have extensive deterioration. The last maintenance inspection was carried out in 2003, covering approximately 80% of the properties and condition profiles and maintenance have not been kept up to date.

Unfortunately, there are still approximately 20,000 South Australians who are languishing on the public housing waiting list and a very similar number receiving specialist homelessness services every year. With the loss of more than 20,000 public housing properties over the last 20 years, I do not think the similarity between the three sets of numbers is a coincidence.

The lack of public housing is directly connected to homelessness, now that the difference between paying rent at 30 percent of household income and a private market rent is much too large for many people to afford.

### Fast-forward to 2018

The South Australian election occurred in March 2018 and, for the first time in 16 years, the Liberals are in power. Shelter SA, other peak bodies and many service providers spent a lot of time during that 16 years getting to know the opposition and the various shadow ministers, and working to provide them with the information we knew they needed to develop evidence-based policy – and I think it has finally paid off.

In November, the newly established Housing Authority held a consultation with approximately 80 key housing industry

# Our Year in Photos





Thank you for your research in Mount Gambier through Blue Sky's workshop. The presentation was great and Alice talking on ABC South East Radio was excellent

Chris Plunkett, Soroptimist and participant at the Mount Gambier workshop

It wouldn't have been possible to be remotely constructive without balanced people such as yourself brought to the meetings. Thanks for your contributions and your continued voice of reason in the media

Sean McNamara, Former Associate Director, Community & Culture, City of Adelaide

I just had a look at this policy document and would like to congratulate Shelter SA and all the partners responsible. What a useful "go to" resource for the community and policy makers alike

Julie Blake, Chief Executive Officer, Westside Housing Association

# Quotes from Stakeholders





**PAUL ASTLEY**  
Chairperson



**PATRICK KUKLA**  
Deputy Chairperson



**TOM EARLS**  
Public Officer



**JOHN SMITH**  
Secretary



**MICHAEL GEORGE**  
Treasurer



**ROB EDWARDS**  
Member



**CLARE MACADAM**  
Member



**FIONA KELLY**  
Member



**JOANNE FOX**  
Member

# Board 2018-2019



**ALICE CLARK**  
Executive Director



**BONNIE KEATES**  
Projects & Events Officer



**SORCHA WALSH**  
Stakeholder Engagement  
Officer



**MICHELLE LINDBLOM**  
Bookkeeper & Projects Officer



**MATTHEW TIEU**  
Policy Officer



**CAITLIN SMITH**  
Expo Management Team

**Staff 2018-2019**

## Individual Members

Andris Banders  
Clare MacAdam  
David Scougall  
David Kilner  
Glen Jones  
John Langton  
John Smith  
Julie Conway  
Lisa Carter  
Mark Parnell  
Marlene Littlewood  
Meredith Hennessy  
Michael George  
Pam Simmons  
Patricia Kerwood  
Paul Astley  
Penny Sommers  
Raymond Radice  
Rob Edwards  
Rodney Purbrick  
Tom Earls

## Organisational Members

Adelaide Day Centre  
Junction Australia  
Centacare  
Dementia Australia  
Centre for Housing, Urban Regional  
Planning  
Relationships Australia  
Uniting Care Wesley Bowden  
Baptist Care SA  
Hutt St Centre  
Safe Pets Safe Families  
Westside Housing Association  
The Salvation Army (Ingle Farm)  
Community Housing Limited  
Neami National  
Community Transitions (OARS)  
University of SA Commerce  
Catherine House  
Women's Safety Services  
Exceptional Needs Unit  
Housing Choices Australia  
Uniting Country SA  
Salvation Army (Towards Independence)  
SYC  
Anglicare SA

Lutheran Community Care  
Salvation Army (Port Augusta)  
City of Adelaide  
Carrington Cottages  
Life Without Barriers  
Adelaide Benevolent Society  
University of SA Accommodation Services  
St John's Youth Services  
Women's Legal Services SA

## Reciprocal Members

Aboriginal Health Council of South Australia  
Youth Affairs Council SA  
Community Housing Council SA  
Volunteering SA NT  
Mental Health Coalition of South Australia  
Multicultural Communities Council of SA  
SA Council of the Aged  
Community Centres SA  
South Australian Network of Drug & Alcohol Services  
Grandparents for Grandchildren SA  
South Australian Council of Social Service  
Homelessness SA

# Members 2018-2019



## **MAILING ADDRESS**

PO Box 6207 Halifax St Adelaide SA 5000

## **EMAIL ADDRESS**

[sheltersa@sheltersa.asn.au](mailto:sheltersa@sheltersa.asn.au)

## **PHONE NUMBER**

08 8223 4077