

Shelter SA: a resource for school students II

Social housing is a type of housing that is owned by governments or not for profit organisations. Social housing is for people living on low incomes who cannot afford to buy a house or get into private rental.

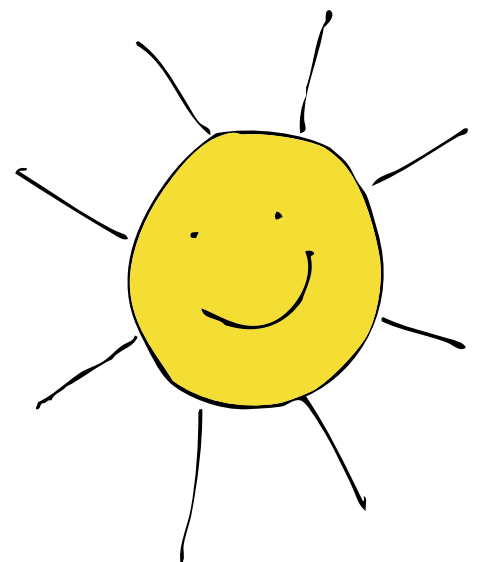


People living in social housing pay rent that is set at 30% of household income so that they can afford everything else they need like food, electricity bills, transport and clothes. But there are around 20,000 South Australians waiting for social housing and we don't have enough to go around.



The cost of owning a home or renting privately in South Australia is not cheap and we need more social housing so that everyone can have an affordable, safe and secure place to call home.

Research shows that people living in good housing are happier and more productive members of society. Without proper shelter, it's hard to live your life. Where do you live and is your housing affordable?



Please contact sheltersa@sheltersa.asn.au if you have any questions!